

Registered Northern Ireland Accommodation Stock

by Local Government District area

end of March 2025



Total Northern Ireland

	Number	Units	Rooms	Bed-spaces
Hotels	141		9,548	21,500
Guest House	66		644	1,512
Guest Accommodation	559		2,444	5,434
Bed & Breakfast	434		1,477	3,243
Self-Catering	4,727	5,868	15,201	30,440
Bunkhouse	11		30	149
Hostel	40		486	2,057
Total	5,978		29,830	64,335



Belle Isle Estate, Lisbellaw

Figures exclude school, university and college stock which offer accommodation, totalling 9 premises with 3,580 rooms and 3,984 bed-spaces

Antrim & Newtownabbey Borough Council

	Number	Units	Rooms	Bed-spaces
Hotels	8		576	1,216
Guest House	4		30	81
Guest Accommodation	21		44	105
Bed & Breakfast	17		56	118
Self-Catering	78	99	223	431
Bunkhouse	0		0	0
Hostel	1		40	44
Total	129		969	1,995

6% of the available hotel rooms in NI are in Antrim & Newtownabbey LGD (only three other LGDs have more hotel rooms).



Kingfisher Country Estate, Templepatrick

Ards & North Down Borough Council

	Number	Units	Rooms	Bed-spaces
Hotels	8		373	762
Guest House	8		73	159
Guest Accommodation	41		98	221
Bed & Breakfast	15		42	83
Self-Catering	267	298	669	1,313
Bunkhouse	1		1	3
Hostel	1		30	82
Total	341		1,286	2,623

4% of the available hotel rooms in NI are in Ards & North Down LGD. This LGD has the fourth lowest number of hotel rooms of all the LGDs.



The Old Inn, Crawfordsburn

Armagh City, Banbridge & Craigavon Borough Council

	Number	Units	Rooms	Bed-spaces
Hotels	7		207	556
Guest House	5		28	60
Guest Accommodation	21		76	166
Bed & Breakfast	27		97	211
Self-Catering	107	126	319	658
Bunkhouse	0		0	0
Hostel	1		13	62
Total	168		740	1,713

Armagh City, Banbridge & Craigavon LGD has the lowest number of hotel rooms and the third lowest number of self-catering rooms of all the LGDS.

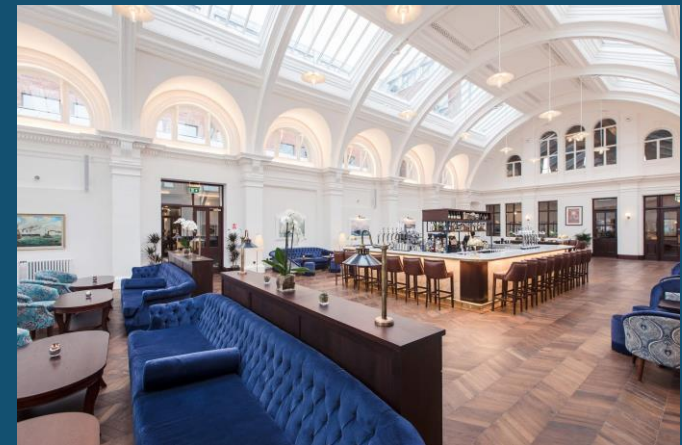


Crannagael House, Portadown

Belfast City Council

	Number	Units	Rooms	Bed-spaces
Hotels	37		4,780	10,335
Guest House	3		22	47
Guest Accommodation	56		531	1,111
Bed & Breakfast	71		216	432
Self-Catering	638	882	1,861	3,598
Bunkhouse	0		0	0
Hostel	9		111	451
Total	814		7,521	15,974

Around half of the available hotel rooms and bed-spaces in NI are located in the Belfast LGD area.



TitanicHotel, Belfast

Causeway Coast & Glens District Council

	Number	Units	Rooms	Bed-spaces
Hotels	22		766	1,998
Guest House	14		171	416
Guest Accommodation	120		364	843
Bed & Breakfast	114		421	1,005
Self-Catering	2,061	2,367	6,933	13,828
Bunkhouse	4		9	53
Hostel	11		107	468
Total	2,346		8,771	18,611

Causeway Coast & Glens LGD has the largest number of GH/GA/BB rooms and the largest number of self-catering rooms of all the LGDs.



Dunluce Lodge, Portrush

Derry City & Strabane District Council

	Number	Units	Rooms	Bed-spaces
Hotels	15		903	2,073
Guest House	5		62	145
Guest Accommodation	41		225	448
Bed & Breakfast	34		158	334
Self-Catering	155	200	465	926
Bunkhouse	0		0	0
Hostel	3		22	110
Total	253		1,835	4,036

Derry City & Strabane LGD has the second largest number of hotel rooms (after Belfast).



Bishop's Gate Hotel, Derry-Londonderry

Fermanagh & Omagh District Council

	Number	Units	Rooms	Bed-spaces
Hotels	8		376	878
Guest House	10		88	219
Guest Accommodation	57		396	902
Bed & Breakfast	39		126	269
Self-Catering	314	521	1,376	2,847
Bunkhouse	0		0	0
Hostel	1		9	56
Total	429		2,371	5,171

Fermanagh & Omagh LGD has the third largest number of GH/GA/B&B rooms of all the LGDs.



4% of the available hotel rooms in NI are in Fermanagh & Omagh LGD.



Lusty Beg, Kesh

Lisburn & Castlereagh City Council

	Number	Units	Rooms	Bed-spaces
Hotels	5		300	754
Guest House	1		6	13
Guest Accommodation	37		124	297
Bed & Breakfast	12		51	112
Self-Catering	97	131	318	638
Bunkhouse	0		0	0
Hostel	1		5	40
Total	153		804	1,854

3% of the available hotel rooms in NI are in Lisburn & Castlereagh City LGD. This LGD has the third lowest number of hotel rooms of all the LGDs.



Larchfield Estate, Lisburn

Mid & East Antrim Borough Council

	Number	Units	Rooms	Bed-spaces
Hotels	11		472	1,033
Guest House	2		30	61
Guest Accommodation	40		191	410
Bed & Breakfast	30		97	211
Self-Catering	240	291	685	1,363
Bunkhouse	3		12	53
Hostel	0		0	0
Total	326		1,487	3,131

5% of the available hotel rooms in NI are located in this LGD.



Mid & East Antrim has 7% of the available GH/GA/B&B rooms in NI and 5% of the available self-catering rooms.



Galgorm Resort, Galgorm

Mid Ulster District Council

	Number	Units	Rooms	Bed-spaces
Hotels	9		245	629
Guest House	6		52	119
Guest Accommodation	22		69	164
Bed & Breakfast	21		60	142
Self-Catering	146	191	462	974
Bunkhouse	1		2	4
Hostel	1		8	78
Total	206		898	2,110

Mid Ulster LGD has the second lowest number of hotel rooms of all the LGDs.

Mid Ulster LGD has 4% of the available GH/GA/B&B rooms in NI and 3% of the available self-catering rooms.



Letteran Lodges, Magherafelt

Newry Mourne & Down District Council

	Number	Units	Rooms	Bed-spaces
Hotels	11		550	1,266
Guest House	8		82	192
Guest Accommodation	103		326	767
Bed & Breakfast	54		153	326
Self-Catering	624	742	1,890	3,864
Bunkhouse	2		6	36
Hostel	11		141	666
Total	813		3,148	7,117

Newry, Mourne & Down LGD has the second largest number of self-catering rooms and the fourth largest number of GH/GA/B&B rooms of all the LGDs.



This LGD has 6% of the available hotel rooms in NI.



Slieve Donard Hotel, Newcastle



TOURISM
NORTHERN
IRELAND